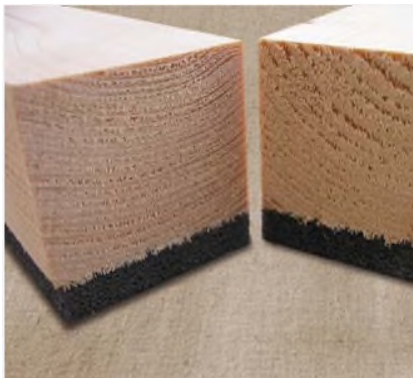


category	soundproofing
description	acoustic floor batten system
part code	AB45, AB54, AB61, AB70, AB75



**Custom
Audio
Designs**



Should a batten height other than that detailed on this page be required please contact us for further technical advice and availability.

AB45–AB70 ISOCHECK SHALLOW ACOUSTIC BATTEN SYSTEM is a suspended system designed to reduce sound transmission through a concrete structural sub-floor. It consists of a layer of 8mm 'Isopoli' bonded to a softwood batten. The system is suitable for new and converted buildings.

When installed as part of a complete party floor construction it enables a concrete floor to meet the sound transmission standards of ADE 2003 (amended 2004).

robustdetails

Benefits

- High acoustic performance
- Simple installation
- Services can run beneath
- Made from recyclable materials
- Maintenance-free



Product Data

- Overall batten size 2400mm x 45mm x 45mm*
- Resilient layer thickness 8mm
- Resilient layer: Isopoli cross-linked

**alternative batten depths are available to special order*

Applications

- Concrete floors
- New builds and conversions
- Meets new Part E Building Regulations
- Meets new RSD details

Installation

- 1 Lay Isocheck shallow batten, resilient layer side down, at 400mm max. centres for 18mm chipboard flooring or 500mm max. centres for 22mm chipboard flooring.
- 2 Fix Isocheck acoustic angled flanking band on the edges of the chipboard sheets just before they are pushed against the perimeter walls to isolate the board from the wall.
- 3 Apply Isocheck adhesive to any tongued and grooved panel joints.
- 4 Install skirting and trim off excess flanking band.



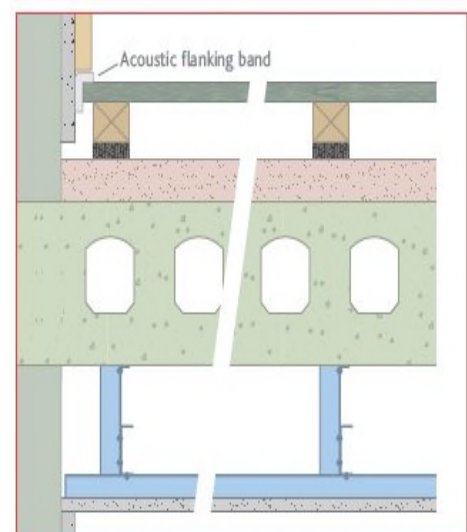
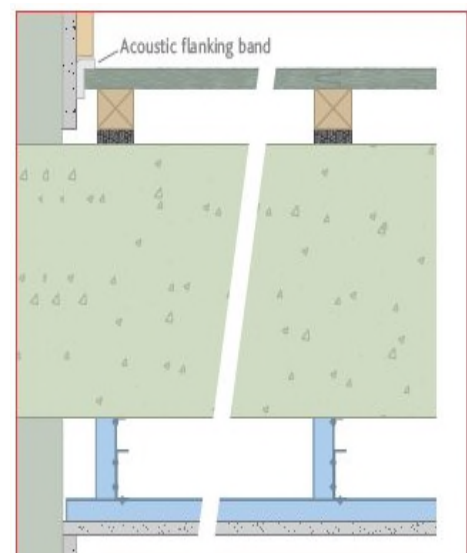
Performance

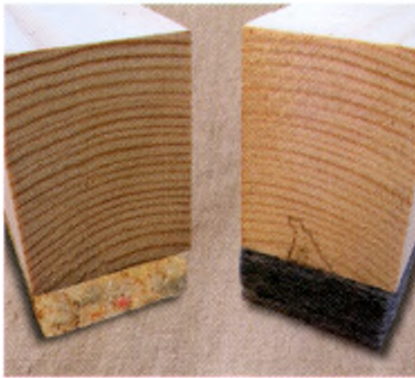
Treated floor meets with the descriptive FFT3, typically within Robust Detail E-FC-2. Using deeper battens (min. 70mm) would conform to FFT1 within E-FC-2 and E-FC-7.

- 18mm or 22mm chip-board deck.
- Isocheck shallow battens at 400mm max. centres.
- Min. 250mm in-situ concrete floor slab, 2400kg/m³ min. density.
- Min. 40mm, 80kg/m² screed applied directly to slab.
- Suitable RD approved metal ceiling system.
- Acoustic flanking band reduces the impact vibration leaking via structural walls and assists in reducing airborne and impact sound paths.

Associated products

- Acoustic flanking strip/band – L-shaped profile, 1.8m lengths.
- Quote part code AC160.





Should a batten height other than that detailed on this page be required please contact us for further technical advice and availability.

AB75 ECOCHECK DEEP ACOUSTIC BATTEN SYSTEM is a suspended system designed to reduce sound transmission through a timber structural sub-floor. It consists of a layer of 15mm LRAC bonded to a softwood batten. The system is suitable for new and converted buildings.

When installed as part of a complete party floor construction it enables a concrete floor to meet the sound transmission standards of ADE 2003 (amended 2004).

robustdetails

Benefits

- High acoustic performance
- Simple installation
- Services can run beneath
- **Made from recyclable materials**
- Maintenance-free



Product Data

- Overall batten size 1800mm x 45mm x 45mm*
- Resilient layer thickness 8mm
- Resilient layer: Isopoli cross-linked

**alternative batten depths are available to special order*

Applications

- Timber floors
- New builds and conversions
- Meets new Part E Building Regulations
- Meets new RSD details

Installation

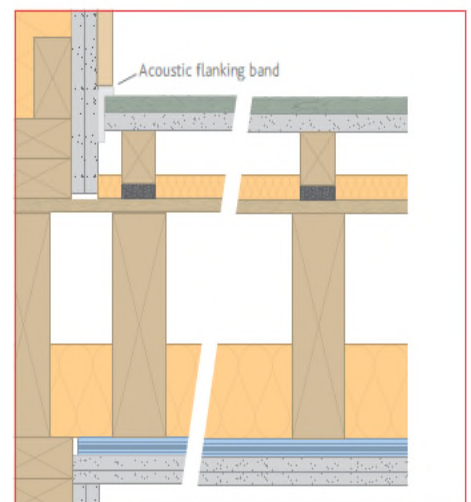
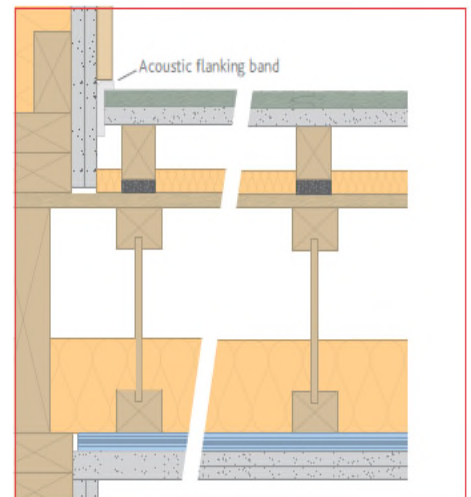
- 5 Lay Ecocheck deep batten, resilient layer side down, at 400mm max. centres for 18mm chipboard flooring or 500mm max. centres for 22mm chipboard flooring.
- 6 Fix Isocheck acoustic angled flanking band on the edges of the chipboard sheets just before they are pushed against the perimeter walls to isolate the board from the wall.
- 7 Apply Isocheck adhesive to any tongued and grooved panel joints.
- 8 Install skirting and trim off excess flanking band.



Performance

Treated floor meets with the descriptive FFT1, typically within Robust Detail E-FT-1, E-FT-2, E-FT-3, E-FS-1, E-FS-2.

- 18mm or 22mm chip-board deck.
- Isocheck shallow battens at 400mm max. centres.
- Joists or decking as per Robust Details approved.
- Suitable RD approved metal ceiling system.
- Acoustic flanking band reduces the impact vibration leaking via structural walls and assists in reducing airborne and impact sound paths.



Associated products

- Acoustic flanking strip/band – L-shaped profile, 1.8m lengths.
- **Quote part code AC160.**

Specification

The acoustic floor shall be:

Isocheck (Shallow Batten or Deep Batten) by Custom Audio Designs Ltd, 5 Ridgeway Business Park, Bedford Road, Petersfield, Hampshire, GU32 3QF and installed in accordance with the manufacturer's instructions and recommendations.

General data

Product	Isocheck Shallow Batten System		
Part code	Height	Width	Length
AB30	45mm	45mm	2400mm
AB45	54mm	45mm	2400mm
AB50	61mm	45mm	2400mm
AB60	70mm	45mm	2400mm
AB70	75mm	45mm	1800mm