

Acoustic Panel Systems



TYPE A: 'T' JOINT PANEL SYSTEM

This is the most economical panel utilising white Upvc fixing sections. The panels have cut edges on all four sides. The Upvc sections serve two functions. One is to decoratively mask the edges and the other is as structural fixing sections. This system is the most flexible as panels can be cut onsite to suit wall dimensions. The fabric cover is adhered to the front face only and will remain in place even when the panels are cut, the raw edges are hidden by the fixing trims



TYPE B: BUTT JOINT PANEL SYSTEM

This eliminates the requirement of a tee joint section as this panel has reinforced long edges and the fabric facing is wrapped around the two long edges of the panel. This results in a neat, crisp butt joint between the panels. The fabric cover is wrapped around the two long sides which also have reinforcing strips to protect the edges



TYPE C: SHADOW JOINT PANEL SYSTEM

This panel has no visible fixing sections on any of the four sides of the panel. The panel has reinforced edges on all sides with the fabric bonded to the face and all four sides are wrapped to rear. This results in a beautiful individual panel which can be used in single units or joined together to other panels or with shadow gaps as a design feature. The fabric cover is wrapped around the two long sides, and the two short sides which all have reinforcing strips to protect the edges.

APPLICATION

These acoustic panels are used to reduce reverberation noise levels in buildings such as lecture theatres, music rooms, offices, boardrooms, sports and community halls, classrooms, cinemas, interview rooms and many other applications. They transform a stark, echoing area into a warm quiet congenial work place. These panels are fabric covered and therefore they decorate and solve acoustic problems in one operation. They are simple to install in three different configurations.

MANUFACTURE

These acoustic panels are made from resin bonded fibreglass specifically tooled and pressed for maximum sound absorption. The panels are fabric finished hence forming an acoustic panel which is decorative, durable and resistant to mild impacts.

FINISHES

A wide range of standard fabric colours are available. Upvc trims are available in white but can be sprayed with suitable paint on site to achieve any required colour.

FIRE SAFETY

The acoustic glass fibre core is rated as Class0 to BS476. Standard fabrics comply with Part7 (class1) to BS476. Class0 fire rated fabrics are available upon request. Upvc trims are fire rated as BS476 part7. Like normal Upvc, the trims have a maximum softening limit of 60°C.

WEIGHT

The panels weigh approximately 3Kg/m². The Upvc trims weigh approx. 1Kg/length.

CUTTING

The panels can be cut with a sharp knife. Upvc trims and the panel edge reinforcement strips can be cut easily with a fine toothed fret saw or strong tin snips.

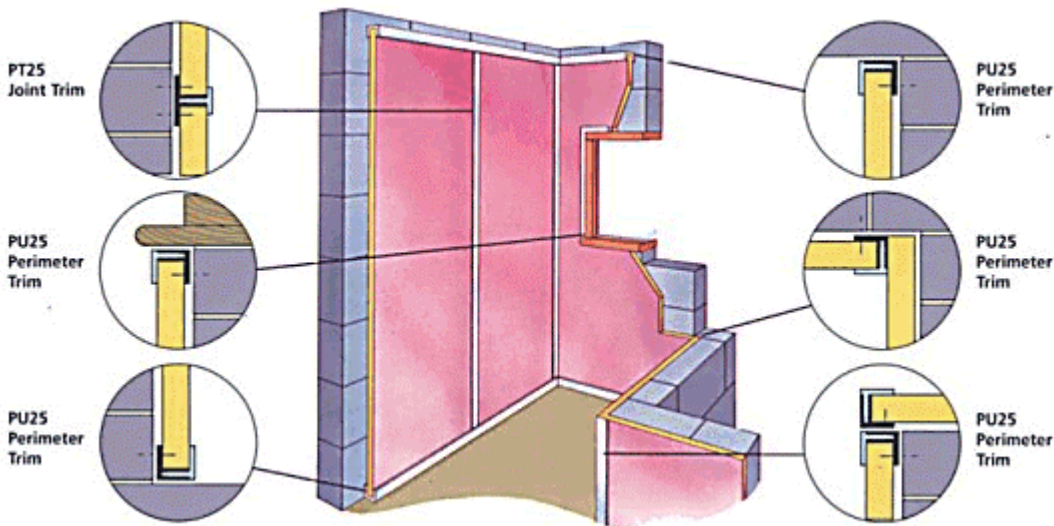
FABRIC MAINTENANCE

Fabric coverings can be wiped clean with a damp cloth and vacuumed or brushed periodically.

ACOUSTIC ABSORPTION

Noise reduction Coefficient 0.92 (i.e. 92%)

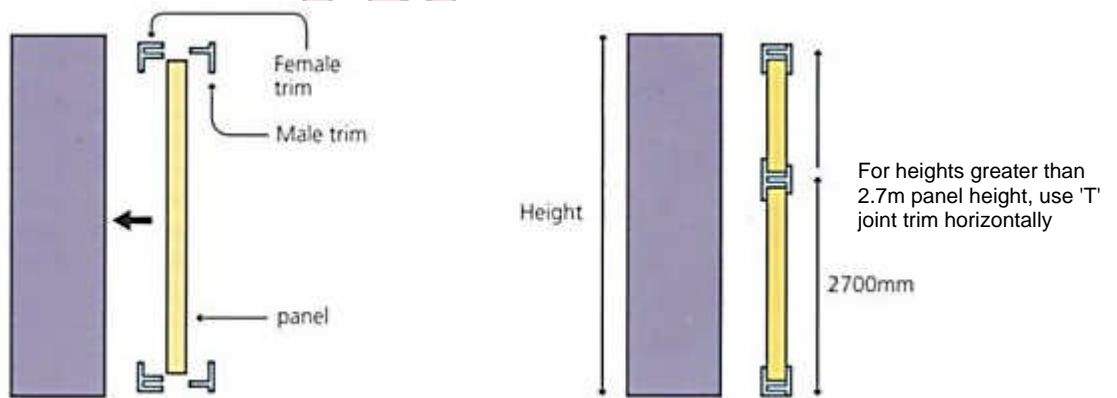
TYPE A: TEE JOINT ACOUSTIC PANEL SYSTEM



FIXING GUIDE

- A. Screw fix Upvc female perimeter trim to top, bottom and end of walls.
- B. Screw fix Upvc female 'T' joint, trim vertically between top and bottom Upvc female perimeter trims, allowing for the panels width and height.
- C. Cut and insert individual panels to fit between female perimeter and female 'T' joint trims. Push fit top and bottom male perimeter trims then neatly cut vertical male perimeter and vertical male 'T' joint trims to fit between the top and bottom perimeter trims and push fit together. Make sure to place the 'pullstrip' labeled end upwards. Insure that all trims are fully pushed in and located.

EASY FIX
INSTALLATION
- by using
Upvc clip-in trims



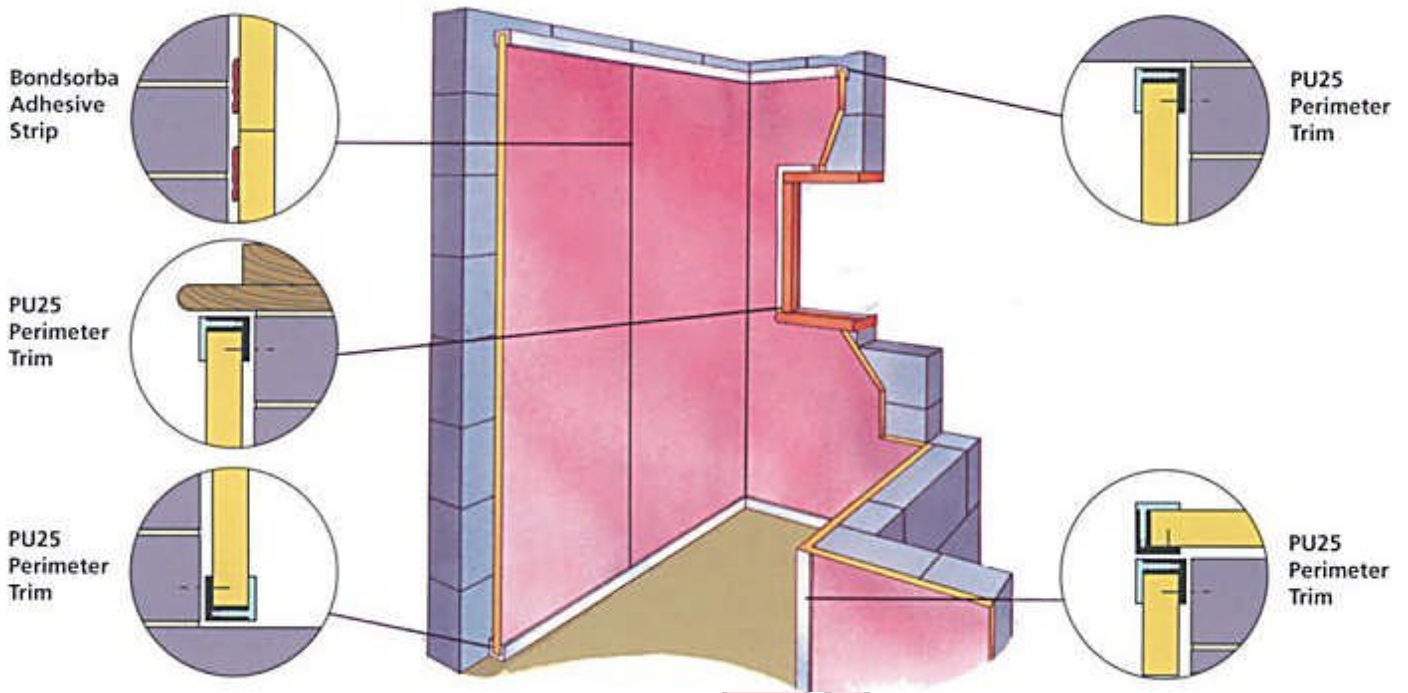
INSTALLATION

Use a spirit level to align all horizontal and vertical surfaces. Drill oversized holes in the Upvc female trims larger than the screw shank but smaller than the screwhead. Use the 'V' line as a guide. Screw fix at maximum of 400mm centres.

NOMINAL DIMENSIONS

Panel Size: 2700mm x 1200mm
 Thickness: 25mm
 White Upvc fixing trims: 2700mm lengths

TYPE B: BUTT JOINT ACOUSTIC PANEL SYSTEM



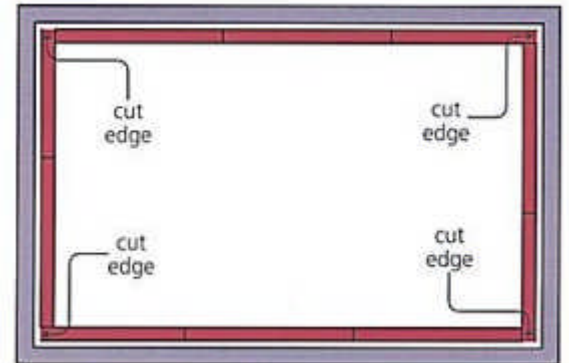
FIXING GUIDE

A. Screw fix Upvc female perimeter trim to top, bottom and end of walls.

B. Cut panels to size. Position individual Butt Joint panels to fit between the female perimeter trims. Ensure that the visible panel butt joints are tight and straight.

C. Remove panels away from the wall and apply an even brush coat of contact adhesive (approx. 100mm wide x 150mm long strip) on the wall to coincide with the perimeter edge of the rear of the panels about half way down the panel height and allow to touch dry for about 15 minutes. Then apply a similar strip of adhesive on the corresponding position on the back of the panels so they coincide with the glue positions on the wall. Allow to touch dry (10-15 minutes). Carefully reposition the panels in the original positions. The panels must be carefully repositioned as once contact is made with the adhesive they cannot be readjusted.

D. Push fit top, bottom and end male perimeter trims into female trims. Ensure that all trims and panels are fully pushed in and located.



If paneling runs generally end in a corner of a room the neatest method of installation is shown above. Because no panel run has more than one cut edge at each end therefore all these are hidden in corners by the uncut panel. This eliminates the need for any internal corner trims hence resulting in a neater finish.

NOMINAL DIMENSIONS

Panel Size: 2700mm x 1200mm
 Thickness: 25mm
 White Upvc fixing trims: 2700mm lengths

TYPE C: SHADOW JOINT ACOUSTIC PANEL SYSTEM

INSTALLATION TO WALLS

Panels are fixed with contact adhesive. This is a simple and strong adhesive system for bonding the panels to walls or ceilings. Panels can be applied direct to concrete, brickwork, wood, plaster or metal. There is an immediate bond, therefore no mechanical support is required or the need for drilling any fixing holes.

SURFACE PREPARATION

The wall or ceiling must be clean, dry and free from loose paint, plaster, dust etc. Wallpaper should be removed, gloss paint roughened and emulsion paint brushed with a stiff brush to ensure it is firm. On absorbent surfaces an initial priming coat may be necessary and should be allowed to dry for at least 30 minutes before applying the bonding coat.

FIXING PANELS

Mark the position of the panels on the wall. Apply an even brush of contact adhesive (approx. 100mm wide x 200mm long strips) on the wall to coincide with the perimeter edge on the rear of the panel at maximum of 900mm centers and allow to touch dry for about 15 minutes. Also apply an even brush coat of adhesive on the corresponding positions on the back of the panel so they coincide with the positions on the wall. Allow to touch dry (10-15 minutes). Carefully position the panel, fit one corner first, then align vertically and horizontally. Apply even, firm pressure along the lines of the adhesive positions. The panels must be carefully positioned as once contact is made they cannot be readjusted.

NOMINAL DIMENSIONS

Panel Sizes:

2700mm x 1200mm
2400mm x 1200mm
2100mm x 1200mm
1800mm x 1200mm
1500mm x 1200mm
1200mm x 1200mm
900mm x 1200mm

Thickness:

25mm

White Upvc fixing trims:

2700mm lengths

