

category	soundproofing
description	IsoScreed Rubber
part code	A345/A350/A355



A345-355 ISO-SCREED RUBBER is a polyurethane-bound mixture of selected rubber fibres and is ideal for use under screeds as a resilient layer. Available in 3mm, 6mm, and 10mm (high load) thicknesses, the product has a high resistance to compressive loads and remains outstandingly elastic.

Benefits

- Provides significant reduction in impact noise and vibration
- Will not collapse out even under high point loads
- Easy to install
- Resistant to ageing and deformation
- Minimal creep even under high loads
- Excellent thermal conductivity.
- Low cost
- Does not significantly raise the floor level

Uses

- Impact reduction under screed.
- Suitable for concrete floors.
- Exceeds new Part E Building Regs.
- Suitable with underfloor heating.

It has high acoustic benefits for impact and airborne noise and is used extensively in new build and refurbishment construction projects where Pre-Completion testing is preferred to Robust Details.

Technical Specification

Product	A100 Acoustic Barrier Mat
Roll size 3mm (A345)	20m x 1m
Roll size 6mm (A350)	10m x 1.25m
Roll size 10mm (A355) (high load)	6m x 1.25m
Tensile strength	Approx. 0.7 MPa (DIN 53571)
Tear resistance	Approx. 75% (DIN 53571)
Nominal thickness	3mm; 6mm; and 10mm (HL)
Density	Ca. 700Kg/M ³
Service temperature	-30°C - +80°C
Flammability	Class B2
Impact Reduction	Δ 21dB under a 50mm screed

ISOSCREED Rubber

significantly reduces impact noise and vibration under floor screeds as well as providing a degree of airborne and thermal insulation.

Impact sound reduction Δ 21dB under a 50mm-thick screed.

Acoustic Performance

Field Sound Testing on the floor build-up on the next page gave the following results:

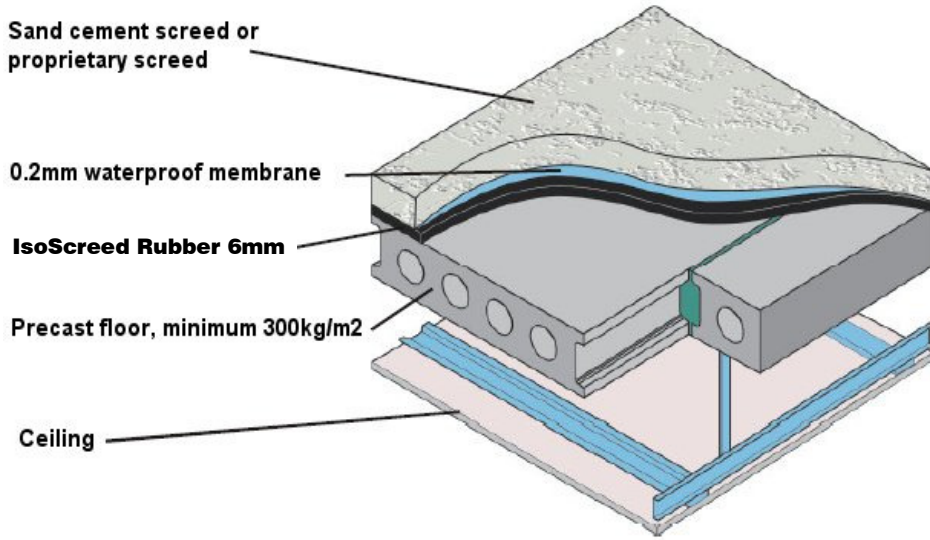
$$D_{nTw} + C_{tr} = 49\text{dB}$$

$$L_{nTw} = 48\text{dB}$$

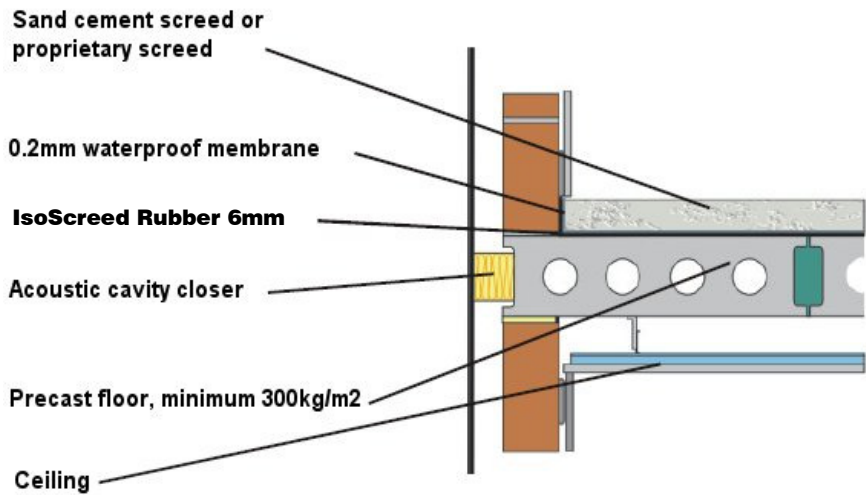
The floor consisted of:

- sand and cement screed
- 6mm IsoScreed Rubber
- Byson beam and block
- 100mm void with acoustic insulation
- MF suspended ceiling on acoustic hangers
- 12.5mm plasterboard

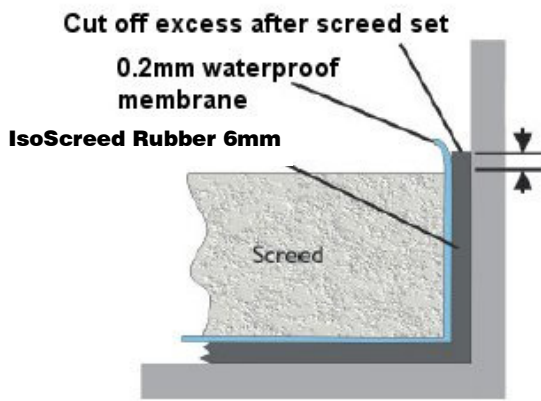
A high load version is available (IsoScreed Rubber 10mm [A355]) for the most demanding applications. Contact our Technical Department for further information.



PLEASE NOTE:
Failure to follow
the exact wall
junction detail will
cause an acoustic
failure!



Perimeter Detail



Alternative Joint Detail

