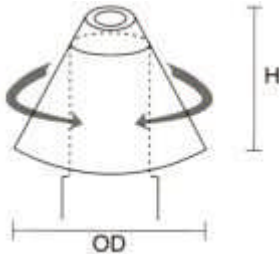


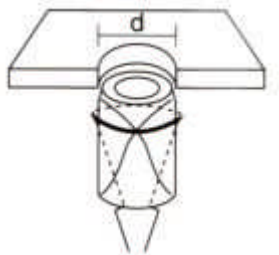
FIRE HOOD INSTALLATION

In a fire situation the covers expand internally to fill the available space with a highly insulating fire resistant char. Thus the fire is unable to penetrate the hole and the cover is able to give additional insulation protection to the ceiling void to reduce the chance of heat build up and ignition of flammable materials such as accumulated dust and insulation.



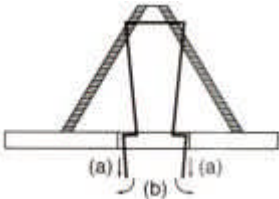
Step 1.

Grasp legs firmly and roll cover into a tight cylinder. Ensure the wiring loom is through the slot before installation.



Step 2.

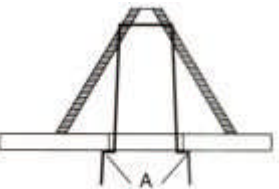
Keeping a tight grip on the legs, feed the cover through the cut out made for the downlighter.



Step 3.

Ensure cover has sprung back into its original cone shape.

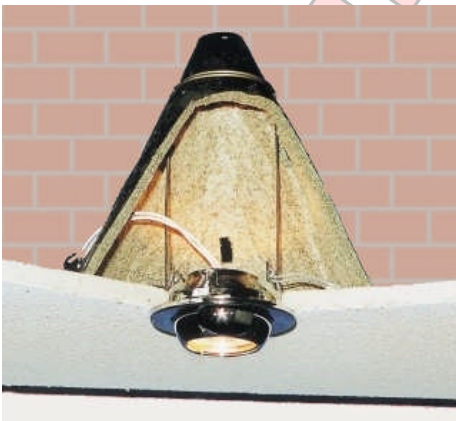
- (a) Grasp legs and pull down until L section clears the underside of the ceiling.
- (b) Move legs out until vertical part of L section normal is flush with the side of the cut out.



Step 4.

Release legs so that they grip the underside of the tile or ceiling. Remove the excess of both legs. Cut at point A. Once cover is in place the down-lighter can be fitted as normal.

THE COMPLETED INSTALLATION



PLEASE NOTE:

Remote gearboxes and transformers must be situated outside of the downlighter cover.