

category	sound absorber
description	ProSonic FG acoustic panels
part code	GRG420 - GRG470



PROSONIC FG ACOUSTIC PANELS have a rigid, acoustic-rated fibreglass core with a class 1 fabric covering, available in a selection of colours.

These panels are an efficient, durable, cost-effective solution for reducing excessive reverberation in large spaces.

Units can also be custom made with hooks for easy ceiling mounts or split battens for easy wall mounting which is ideal if you require them to be removable.

Advantages

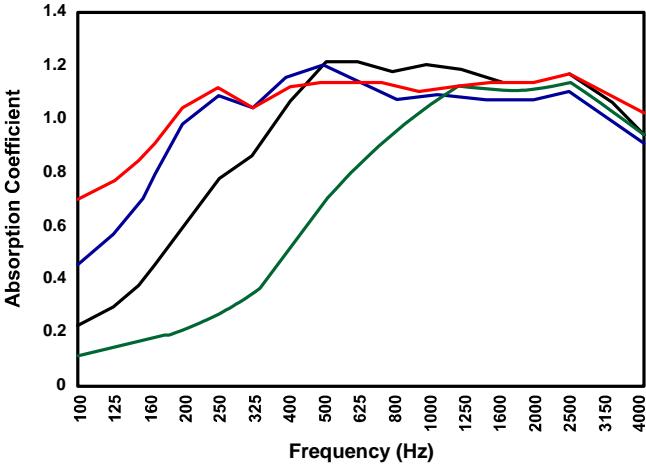
- Easy installation
- Various mounting/fixing options
- Standard and custom sizes
- Class 0 fire rated core
- Wide colour range
- 25mm–100mm thick
- Suitable for use as a Class A, B or C absorber depending on thickness



Also available: digitally printed fabric face acoustic panels in various sizes – part codes SS240–SS290. Contact us for details.

Acoustic Performance

Random Incident Sound Absorption Coefficients



	Legend	25mm	50mm	75mm	100mm
100 Hz		0.10	0.21	0.45	0.69
125 Hz		0.14	0.29	0.56	0.76
160 Hz		0.16	0.41	0.74	0.88
200 Hz		0.20	0.60	0.98	1.04
250 Hz		0.24	0.76	1.09	1.12
315 Hz		0.35	0.87	1.03	1.03
400 Hz		0.50	1.07	1.15	1.12
500 Hz		0.69	1.20	1.20	1.14
625 Hz		0.83	1.21	1.14	1.14
800 Hz		0.95	1.18	1.07	1.13
1000 Hz		1.05	1.19	1.08	1.10
1250 Hz		1.12	1.18	1.07	1.11
1600 Hz		1.10	1.13	1.07	1.11
2000 Hz		1.10	1.12	1.07	1.09
2500 Hz		1.14	1.15	1.09	1.15
3150 Hz		1.05	1.06	1.02	1.08
4000 Hz		0.92	0.95	0.93	1.02

FIXINGS – please note:

When ordering panels, please advise us if you need fixings. Panels are supplied without fixings unless specifically requested. Certain types need to be specified in advance. There will be an additional cost for supplying various clips, chains or battens.

Advice is available from our technical department.

Applications

Custom Audio Designs' ProSonic FG acoustic absorption panels are often used to meet BB93 standards for reverberation control within schools.

They are also suitable for:

- offices
- theatres
- auditoriums
- studios
- halls
- churches
- gymnasiums
- teleconferencing suites, etc.

Specification

Product - Fibreglass acoustic panels

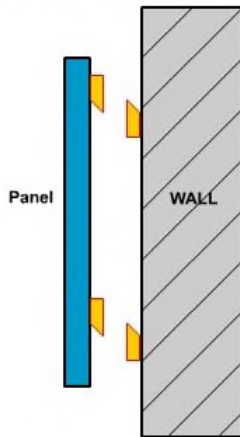
Part code	Size (tolerance ± 3mm)
GRG420	600 x 600 x 25mm
GRG430	1200 x 600 x 25mm
GRG433	1200 x 1200 x 25mm
GRG436	1800 x 1200 x 25mm
GRG440	2400 x 1200 x 25mm
GRG450	600 x 600 x 50mm
GRG460	1200 x 600 x 50mm
GRG463	1200 x 1200 x 50mm
GRG466	1800 x 1200 x 50mm
GRG470	2400 x 1200 x 50mm

For custom-made sizes please email tech@customaudiodesigns.co.uk

Available Edge Profiles

Square Edge Bevelled Edge

Panels offered up to the wall battens and dropped on



Wall method 1.



Wooden split batten gravity fixings

For wall mounting, a split batten is fixed to the wall. The acoustic panel is offered up to the wall batten and simply lowered in place. The split batten on the back of the panels allows easy removal as well as providing an additional airspace behind the absorber for improved acoustic absorption. (This option is only available for panels of 50mm or thicker.)

For flush mounting all panels, the split battens can be recessed in the panel, if specified in advance, but this option can only be achieved using the 50mm panels. 25mm panels can be fitted in the same manner if supplied with the thinner Ali-Battens

Other fixings include: magnetic, spikes, glue, chains and hooks. Please contact us for further details.



Wall Spikes - Metal impaling clips are screwed into the wall. Adhesive is applied to the panel and the wall. The panel is then offered up against the wall spikes and fixed in place.

This method does not allow easy removal of the panels.

For smaller panels spikes can be used without adhesive so the panels can be removed however this does not provide a permanent fix so would not be suitable in areas such as schools.



Embedded bar with chains

This option allows very large heavy panels to be hung from the ceiling.

This option is only available on 50mm thick panels.

Delivery, Storage and Handling

Packing, Shipping, Handling and Unloading

Panels are susceptible to damage and must be handled with great care when removing from packaging and when transporting.

Panels greater than 16 square feet must be carried by a minimum of two people. Panels must **never** be set down on fabric faces, only on the panel back.

Storage and Protection

How to store panels:

- in original packaging until ready to install
- in temperature and humidity controlled conditions for 24 hours prior to installation
- protected from moisture and infestation
- with fabric finish protected from elements that would puncture, tear, snag or otherwise damage the fabric.

Metal 'Z' Bars

This option allows very large heavy panels to be hung from the ceiling or walls

This option is only available on 50mm thick panels.



Hooks

Probably the easiest and most versatile method of hanging the panels from a ceiling.

This option is only available on 25mm-thick panels upwards.

The hooks are simply screwed into the panel which can then be hung from chains.

These fibreglass panels are easy to install and can be made in a wide range of custom sizes. Fixing can be with optional impaling clips or adhesive. Units can also be supplied with a wooden frame surround for ceiling or wall mounting. (See also p2 for split batten fitting.)

Bespoke

- Any height up to 3000mm; any width up to 1200mm
- Thicknesses from 25mm upwards in multiples of 25mm
- Different edge profile options
- Other fabric options are also available at additional cost



Features:

- Edges are square and plumb to within a tolerance of 2 mm.
- Absorption Coefficients and Noise Reduction Coefficient for the product are measured by an independent, accredited NVLAP facility according to the test methods as defined by ASTM C 423 and ASTM E 795.
- Flame Spread and Smoke Developed are tested by an independent, accredited NVLAP facility according to the test methods as defined by ASTM E 84 and NFPA 255.
- Composite Flame Spread Rating of less than 25.
- Smoke Development of less than 450.
- Available with a wide variety of custom fabrics.

Dimensions:

- Custom sizes can be specified up to 3000 (H) x 1200 (W) and with a depth in multiples of 25mm.



NBS

- Manufacturer: Custom Audio Designs Ltd
- Web: www.customaudiodesigns.co.uk
- Tel: +44 (0) 1730 269572
- Product reference: ProSonic F/G fabric wrapped acoustic absorbing panel.
- Size: [??? x ??? mm]. Any size up to 3000 x 1200mm
- Thickness: [25, 50, 75 or 100 mm].
- Fabric/colour: [Cara EJ___].
- Mounting: [Surface mount using a wooden frame].
[Surface mount using spikes].
[Surface mount using adhesive].
[Z bar ceiling fixings].
[Ceiling cloud rings].
[Magnetic].
[Timber split battens proud].
[Timber split battens recessed].
[Metal AllBatts].
[Ceiling wires].
- Edge detail: [Square].
[Bevelled].