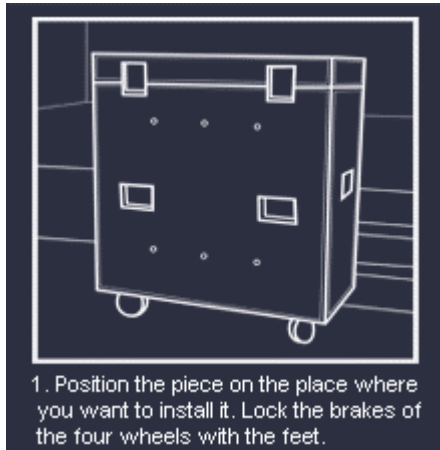
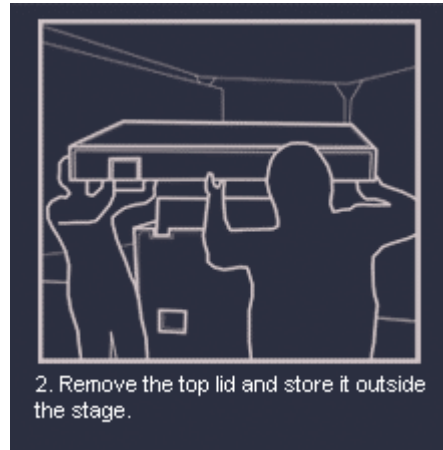


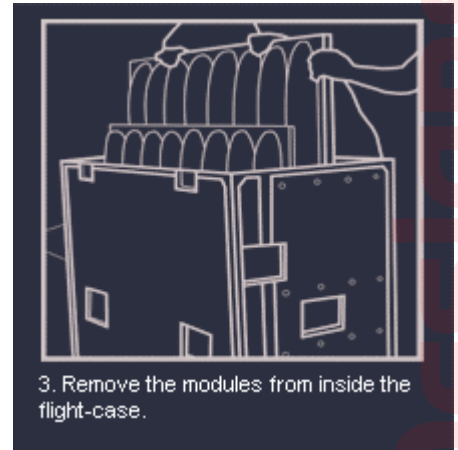
ACOUSTIC SHELL INSTALLATION DETAILS



1. Position the piece on the place where you want to install it. Lock the brakes of the four wheels with the feet.



2. Remove the top lid and store it outside the stage.



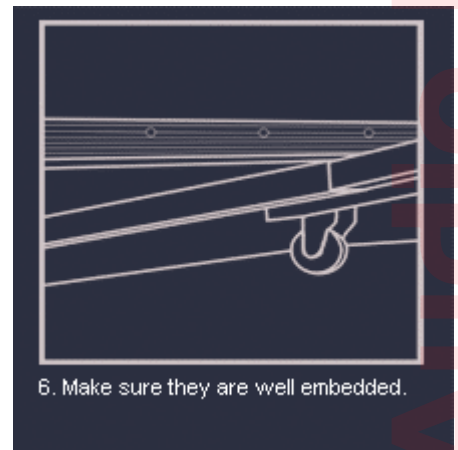
3. Remove the modules from inside the flight-case.



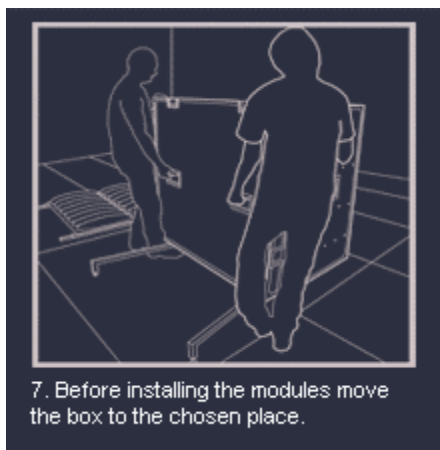
4. Remove the three feet from inside the box and insert them in their places.



5. Level them off.



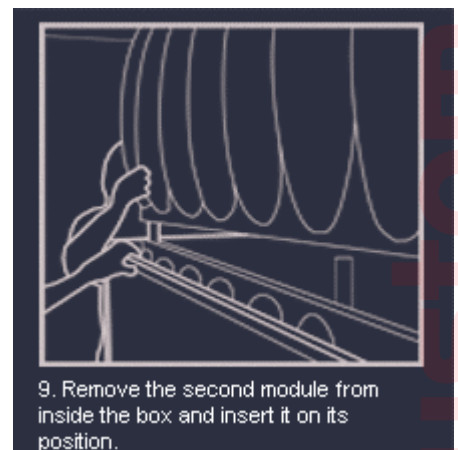
6. Make sure they are well embedded.



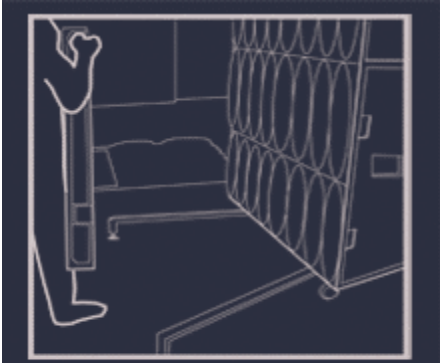
7. Before installing the modules move the box to the chosen place.



8. Check again that the three threaded feet are well adjusted and leveled.



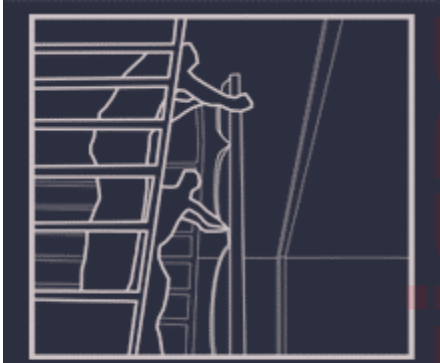
9. Remove the second module from inside the box and insert it on its position.



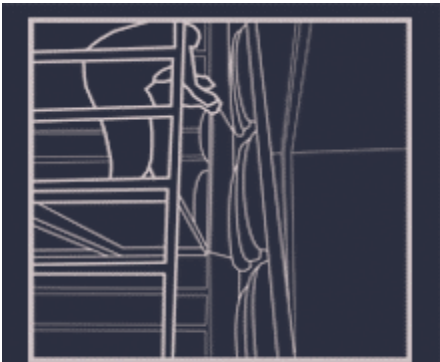
10. Remove the front lid and store it.



11. Remove the third module. For this operation, you will need a double-flight scaffolding.



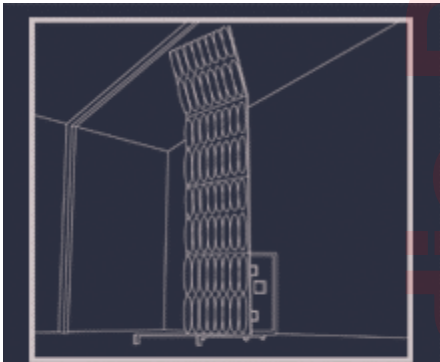
12. Place it carefully with help.



13. Now, remove the fourth module from the flight-case.



14. And insert it on its position. Make sure it is well embedded.



15. Congratulations, your Dynamicflow AcSh is installed. Ready and set for the show!!